

Terra Incrementum

for Disklavier and Open Solo Instrument with Visual Accompaniment

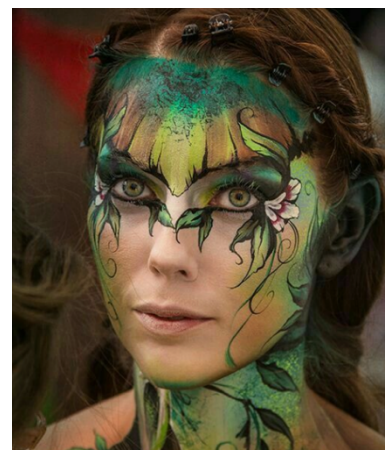
by Rob Harrison

Mandatory Performance Instructions

- The visual accompaniment, provided through online link, consists of a MIDI file for live Disklavier playback, and a video with a recording of the Disklavier part. If using a live Disklavier, mute the video while performing.
- The soloist will perform to the side or below a large screen.
- If using a live Disklavier, the piano must be placed behind the audience. If using the recording, amplification of the playback must be placed behind the audience.
- The soloist will play with a click track through in-ear monitors, set to 120bpm. This will maintain synchronisation with the visual accompaniment.
- If it is not possible to glissando, play these sections as slurred as possible.
- The solo is written to accommodate a variety of instrument's ranges, but adapting the octave is acceptable, if necessary. The 'Treble Clef Instruments (Concert Pitch)' part is written with doubled octaves to accommodate the violin, which cannot play an F# below middle C. Where this occurs, the lower note is preferred.

Optional Performance Instructions

- The soloist will wear only green, loose-fitting, clothing, and no shoes.
- The soloist will temporarily dye their hair dark green or wear a dark green wig.
- The soloist will use green face-paint to cover any visible skin with green vines and leaves (see reference images below).



Treble Clef Instruments (Concert Pitch)

20

mf dolce

p

31

pp

mf

leggerio

43

pp

mf

p

sf

p

55

p

sf

p

66

leggerio

sfz

76

p

espressivo

89

4

102

3

< sfz

mf

3

< sfz

2

113

3

< sfz

3

< sfz

4

leggerio

122

5

134

3 3 3 3 3

146

3 legato 4 3

159

3 2 3 3 3 sfz agitato

167

sfz

177

2

186

196

205

212

ff con brio 3

219

3 pp 11

Bass Clef Instruments (Concert Pitch)

♩ = 120 20

mf dolce *p*

31

pp *mf leggero*

43

pp dolce *mf* *p* *sf* *p*

55

p *sf* *p*

66

leggerio *sfz*

76

p espressivo

89

p

102

<sfz *mf* *<sfz*

113

<sfz *<sfz* *p* *leggerio*

122

p

Treble Clef Instruments (in B \flat)

20 *mf dolce* *p*

31 *pp* *mf* *leggerio*

43 *pp dolce* *mf* *p*

54 *sf* *p* *p* *sf* *p*

65 *leggerio*

75 *p espressivo*

86 *sfz*

97 *mf* *< sfz* *< sfz*

111 *< sfz* *< sfz* *leggerio*

122

Detailed description: This musical score is for Treble Clef Instruments in B-flat. It consists of ten staves of music, numbered 20 to 122. The key signature has three sharps (F#, C#, G#) and the time signature is 4/4. The music features various dynamics including *mf*, *p*, *pp*, *sf*, *sfz*, and *mf*, along with articulations like *dolce*, *leggerio*, and *espressivo*. Rhythmic patterns include triplets, pairs, and groups of four and five notes. The notation includes slurs, accents, and dynamic markings.

134

3 3 3 3

145

3 3 legato 4 3

158

3 2 3 3 3 sfz agitato

166

sfz

177

2

186

196

205

212

ff con brio 3

219

let the note fail as if giving up 11 pp 3